

44 ft 1999 St. Francis 44 MKII, Majestic

\$189,000

Saint Augustine, FL



Boat Details

Make:	St. Francis	Class:	Catamaran	Guest Cabins:	3
Model:	44 MKII	Hull Material:	Fiberglass	Guest Heads:	2
Year:	1999	Drive Type:	Sail Drive	Fuel Type:	Diesel
Length:	44 ft	Beam:	24 ft	Max Draft:	3 ft 2 in
Price:	\$189,000	Boat Location:	Saint Augustine, FL		
Condition:	Used	Name:	Majestic		

Rose Points | All Points Yacht Sales

3074 Harbor Drive, Saint Augustine, Florida, United States

Tel: **904-501-1532**

roseann@sta-sail.com

<https://www.sta-sail.com/all-points-yacht-sales/>

Description

If you are dreaming about setting sail on a safe, comfortable and proven blue water cruising catamaran - do not miss this opportunity!

This 1999 St. Francis 44 MKII is designed by renowned naval architect, Angelo Lavranos, and built by St. Francis Marine in South Africa as a sailing machine. Constructed with solid fiberglass below the water line and vinyl ester resin infused core cell foam sandwich above the water line, Majestic is strong and capable.

A testament to its sailing performance, a St. Francis 44 won the 1994 Cape to Rio Race. In 1999 the 44 was redesigned for additional comfort with an increased bridge deck clearance and increased headroom and given the designation MKII. Further demonstrating her sea worthiness, this boat has sailed across the Atlantic on her own hulls. She has cruised the Caribbean and east coast of the United States. Not only is Majestic a blue water ocean going vessel, but she is ICW compliant with a mast height of 62 feet. This provides plenty of options for traveling the East Coast.

Majestic is a blue water cruising boat that is fully kitted out to go cruise. Majestic is a 4 cabin - 4 head vessel. The present owners have converted her to a 3 cabin + flex space/workshop with 2 heads for their intended use. She is equipped with upgraded low engine hour 40 hp Yanmar diesel engines, lithium house batteries, solar, dockside air conditioning and a new Highfield dinghy with a 25 hp Yamaha outboard.

The present owners have carefully upgraded the systems that count when cruising. These are:

2024:

- New Tides Marine in-mast mainsail track
- Cockpit flooring/ paint
- Two new heads and new plumbing

2023:

- Lithium batteries
- Victron portable backup charger
- New Highfield dinghy with custom made Sunbrella dinghy chaps paired with a 25 hp Yamaha outboard
- Professionally repainted kiwigrip non-skid and gel-coat
- New UV Sunbrella cover on headsail
- New masthead tricolor anchor light and steaming lights
- Full rig inspection in October by Horizon Yachts in Grenada

2022:

- New dodger
- New galley sinks
- New B&G wireless wind sensor
- Starlink satellite communications paired with a router providing high speed internet world wide

2021:

- Custom made solar hard top
- New solar panels (1260 watts total. This is enough solar to power the boat while anchored and for the present owners to live without using a generator.)
- New Victron inverter/charger
- New Victron Smartshunt
- New custom rudders
- New steering cables
- New fixed 2-blade propellers
- All through hulls valves and fittings replaced
- New custom Stackpack & lazy jacks
- New 150 ft. high test anchor chain with 200 ft of new rode

- New holding tank and plumbing
- New Rainman 30 gph water maker
- New WeBoost cell phone signal booster
- New Garmin InReach
- New washing machine
- New trampoline netting and slides
- New acrylic in 90% of the hatches
- Fuel tanks cleaned and polished

2020:

- New Tuft & Needle mattress in master cabin

2019:

- All new standing rigging by West Marine rig shop
- New B&G chart plotter with charts for the entire Caribbean
- New B&G radar
- New CruiseAir 16,000 BTU reverse cycle air conditioning/heater
- New heat exchangers on both engines
- New exhaust elbows on both engines
- New raw water coolant tank

2018:

- New Dyneema lifelines
- New 115L freezer

The present owners of Majestic have cruised and lived aboard her for 20 years. They have raised their children from birth through high school on this boat. Majestic has hosted Thanksgiving dinners, cocktail parties, jam sessions, and dinghy drive-in movie nights. Majestic has sailed comfortably and safely with grandparents and infants.

Majestic has never had an insurance claim. Never had a lightning strike, hull strike, hurricane damage, collision, delamination, water in the core, structural issues, bulkhead issues, sail drive issues, keel damage, or a dismasting or rig failure. She's never been in charter and has been continuously maintained.

Viewings available by appointment in St. Augustine, Florida.

Information & Features

Yanmar 3JH3CE (Engine 1)

Engine Type:	Inboard	Drive Type:	Sail Drive
Fuel Type:	Diesel	Power:	40 hp
Engine Hours:	1750	Propeller Type:	2 Blade

Yanmar 3JH3CE (Engine 2)

Engine Type:	Inboard	Drive Type:	Sail Drive
Fuel Type:	Diesel	Power:	40 hp
Engine Hours:	1550	Propeller Type:	2 Blade

Dimensions

LOA:	44 ft	Max Bridge Clearance:	62 ft
LWL:	39 ft 8 in	Max Draft:	3 ft 2 in
Beam:	24 ft		

Weights

Displacement: 16,000 lb

Speed

Cruising Speed: 7 kn

Tanks

Fuel: 100 gal
Fresh Water: 2 x 75 gal
Holding: 35 gal

Accommodations

Guest Cabins: 3
Guest Heads: 2

Other

Hull Shape: Catamaran Builder: St. Francis Marine
Flag Of Registry: United States
Designer: Angelo Lavranos

Covers

- Lazy Bag
- Lazyjacks

Electrical Equipment

- Inverter
- Shore Power Inlet

Electronics

- AIS
- Autopilot: Raytheon
- Cockpit Speakers
- Compass
- Depthsounder: Raytheon
- GPS
- Log-Speedometer
- Plotter: B&G Vulcan chartplotter (New '19)
- Radar: B&G - Not presently working
- Radio
- VHF: Standard Horizon
- Wi-Fi: Starlink satellite dish
- Wind Speed and Direction: B&G WS320 (New '22)

Inside Equipment

- Air Conditioning: Dockside only
- Deep Freezer: Minus40 115L Freezer ('18)
- Electric Bilge Pump
- Electric Head
- Fresh Water Maker: Rainman portable unit
- Hot Water
- Manual Bilge Pump
- Oven
- Refrigerator: 130L Frigoboat

Outside Equipment/Extras

- Cockpit Cushions
- Davit(s)
- Solar Panel
- Swimming Ladder
- Tender: Highfield aluminum RIB 360 11 ft. 10 in. (New 6/23)

Rigging

- Steering Wheel

Sails

- Fully Battened Mainsail: Neil Pryde
- Genoa: UKSails 10 oz. dacron offshore 105 ('17)

Dimensions

- LOA:** 44 feet
- Beam:** 23 feet 7 inches
- Draft:** 3.4 feet
- Air Draft:** 62 feet (ICW compliant)
- Displacement:** 16,000 lbs.
- Interior Head Room:** 6 ft. 3 inches

Tankage

- Fuel: 100 Gallons
- Water: 150 Gallon in 2 separate 75 Gallon Tanks
- Holding Tanks: 35 Gallons

Engines

- Two Yanmar 40HP 3JH3CE installed midships. (NOTE: St. Francis 44's are normally powered with twin 27HP Yanmars, but Majestic was commissioned to have extra power, she is one of a kind in this aspect)
- Yanmar SD31 saildrives.
- Port engine: 1750 hours
- Starboard engine: 1550 hours
- Extremely well maintained engines. Impellers replaced annually. Fuel injectors are cleaned and serviced regularly. Outdrives serviced annually. Oil and coolant changed annually. Heat exchangers replaced in 2019 and serviced annually. Raw water coolant tank and exhaust elbows replaced in 2019.
- Engines had a professional compression check in 2022.
- New fixed 2-blade propellers in 2021.

Sails

- Neil Pryde fully battened mainsail. Heavy off-shore Dacron built to Tradewind specs for off-shore passages.
- Sunbrella stack pack constructed in 2021 by Yacht Canvas of Annapolis with Lazy Jacks.
- UKSails 10 oz dacron offshore 105 jib purchased in 2017 with a new UV cover made in November 2023 by Turbulence LTD in Grenada.

Rigging

- Dyneema lifelines. New 2018.
- Standing rigging was completely replaced in 2019 by West Marine Rigging. Mast was also unstepped, inspected, and refurbished at that time.
- Tides Marine sail track on mast. New April 2024.
- Standing rigging and chain plates were inspected again by Horizon Yachts in Grenada, November 2023.
- Most of the running rigging was replaced with all Dyneema line in 2012. The mainsheet and traveler were not replaced and are in decent condition but could perform better with replacement.
- Port and Starboard Lewmar 50 self-tailing winches

Steering

- New rudders and rudder posts custom made by Foss Foam November 2021.
- Steering cables replaced and entire steering system inspected by Port Annapolis Marina, November 2021.
- Raytheon autopilot.

Navigation Electronics

- B&G Vulcan chartplotter with premium charts for the entire Caribbean. New 2019.
- B&G WS320 wireless wind sensor. New 2022.
- B&G Radar (not presently working). New 2019.
- High speed GPS and compass integration to allow radar/chart overlay.
- AIS.
- Raytheon depth sounder.
- LED masthead tricolor and steaming lights. New October 2023.
- Dual Electronics XGPS150A Multipurpose Portable Universal Bluetooth GPS Receiver allows any iPad or laptop to become a chartplotter.

Communications

- Starlink satellite dish. New 2022. Mounted on aft arch wired to dedicated pure sine wave inverter and router.
- Standard Horizon VHF radio with AIS feed to chartplotter mounted at nav station.
- 2 Standard Horizon portable VHF radios with GPS location.
- Wireless solar-powered security camera integrated with Starlink for remote monitoring from any location.
- Peplink Mobility 42G, 7-in-1 5G Ready Cellular and Wi-Fi Antenna System with GPS receiver.
<https://a.co/d/hN7xhfB>. New 2022.
- weBoost Drive Reach RV / Cell phone signal booster kit. New 2021.
- Ambient Smart Weather Station mounted on aft arch. New 2021.

Ground Tackle

- 65 pound galvanized steel Mantus anchor.
- 150 feet of high test anchor chain. New 2021.
- 200 feet of $\frac{3}{4}$ inch, 3 strand anchor rode. New 2021.
- Anchor/ mooring bridle. New 2024.
- Mantus chain hook. New 2021.
- Electric windlass. Up/ Down switches. New 2024 (need to be installed)
- LED masthead anchor light. New October 2023.

Solar, Batteries and 12V Systems

Batteries

- 4x 206Ah SOK LiFePO4 Lithium batteries. New 2023. 5000 cycle, 10-year warranty (through 2033) These batteries are the equivalent of 1600 Ah of AGMs with 5x the lifespan.

Solar

- Majestic is set up to run all systems long term completely off solar.
- 3x 420W (1260W total) Mission monocrystalline solar panels. New 2021. These solar panels form the hard top roof for the cockpit.
- 25 year warranty. Made in the USA.

Inverter/ Charger

- Victron MPPT SmartSolar new 2021 / 85A/150V. Bluetooth connectivity, LiFePO4 compatible.
- Victron SmartShunt. New 2021. Uses bluetooth connectivity to monitor with a smartphone so you can see exactly what you are consuming and generating.
- Magnum energy 2500w inverter/charger .
- Dual 30 amp shore power plugs. One dedicated to reverse cycle air conditioning and heating and one for the house bank.
- Four 30 amp shore power cords.
- One 50 to twin 30 amp pigtail.
- One 30 amp to twin 120v /15 amp pigtail
- Victron SmartCharger portable backup charger. New 2023. Bluetooth connectivity and LiFePO4 compatibility.

On Board

- The boat is set up to run long term completely on solar.
- Multiple 12v sockets for fans or other devices and USB charging in each room.
- A purpose-built charging bench with 15 charging ports for all 12 volt chargeable devices like headlamps, fans, iPads, Kindles, power tools, etc.)

Accommodations

Cockpit

- Fully protected cockpit with double seating on the sides.
- Cockpit table folds down for more space or opens for more table area.
- Large storage under the cockpit table.
- Large aft cockpit locker for ample storage.
- Smaller forward storage locker.
- New cockpit KiwiGrip non-skid October 2023.
- New cockpit flooring 2024.
- 2 small and 2 extra large floor drains.
- Single helm seat. Large steering wheel with new wrap applied 2024.
- Hardtop custom made from solar panels and rigid plastic new 2021.
- Hard plexi 3/4 dodger new 2022.
- Oversized, factory built, stainless steel arch to hold dingy and additional solar.
- Full aft swim platform with KiwiGrip non-skid newly applied 2023.
- Freshwater washdown on port side sugar scoop step.
- Solar powered motion control lighting/ can be positioned anywhere.
- Sliding French doors into the salon with detachable, magnetic closing screen new 2024.

Galley

- Majestic has a large galley down in the port hull with ample counter space and ventilation.
- New sinks installed in 2022.
- Force10 brand 3 burner propane stove + oven. Fully functioning but needs to be lit with lighter and shows age.
- 130 liter stainless steel Frigoboat refrigerator with separate compressor.
- Minus40 115 liter freezer new 2018. Specifically designed for solar energy installations in hot climates. Superior insulation and efficient 12V DC refrigeration system provides minimum power consumption while giving top cooling performance.
- Hot running water is electric and engine driven/ 10 gallons.
- Loads of seaworthy storage for provisions and at hand ingredients.
- Additional pantry space in converted space aft of galley. Majestic can provision for many months comfortably in both shelf stable goods and cold storage.

Aft Starboard

- Single cabin with twin bed. Closet space with shelves, and storage under vanity and bed. Ceiling panels are frosted plexi with remote control LED colorful lighting. One large hatch and one small side port for ventilation and light.
- Vent for reverse cycle air conditioning/ heat.
- 12v and 120v outlets for fans and devices plus stereo and speaker.
- Flex-Space for potential composting head. We removed the head to make more play space for our kids. Thru-hull was sealed but the sink is still plumbed. Space can be converted into a head again or used for storage or anything you need. One side port for ventilation.

Midships Starboard

- Outer wall is lined with bookshelves and storage.
- Inner wall is engine access, flex-space, and more storage.
- 1 large hatch and 1 small side port for ventilation and light.

Forward Starboard Cabin

- Queen sized athwartships bunk with new 2020 Tuft & Needle mattress.
- Oversized storage in 4 lockers adjacent to bunk. Deep bookshelf over bunk.
- Reading light with USB charging port + 12v plugs at head of bunk.
- Installed Hella fan + 2 small hatches and 1 large hatch for excellent ventilation and natural light.
- Vent for reverse cycle air conditioning/ heating.
- Under mattress tool storage.
- Custom built charging bench at foot of bed for multiple device charging.
- One deep hanging closet locker, vanity with storage, and one deep multi-shelf locker.

Forward Starboard Head

- En suite head with Jabsco saltwater electric flush, full sized toilet new May 2024.
- Medicine cabinet, wall shelving, under sink storage, and 3 large storage lockers.
- Bathtub with shower.
- One small side port and one large side hatch for ventilation.
- 35 gallon holding tank new 2021 and plumbing new 2024.
- Access to forepeak storage through shower/tub area.

Salon

- Red ultrasuede settee seats 6 people with deep under table storage.
- Wrap around tinted solid glass windows, recently re-sealed. Exterior snap on sun shades.
- 4 ceiling lights on a dimmer. One large LED light at entry.
- 2 opening hatches for ventilation.
- Nav station with breaker panel and space for additional electronics or television.
- Deep shelf storage behind the settee.
- Batteries and 16,000 BTU reverse cycle air conditioning/ heat under settee with large vent in corner behind settee.
- Plynyl flooring by Chilewich.

Aft Port

- Ample work room and pantry. This space was originally a cabin/ head but we converted it into flex-space for work/ school space and storage for provisions. Space is a blank slate with many possible uses and a huge amount of storage.

Midships Port

- Galley spans the center of the port hull.
- Galley is open to the aft work room and pantry with no door giving the space an open feel.
- 1 large hatch and 1 small side port for ventilation and light.
- Ample counter space and deep shelves for seaworthy provision storage.
- Vent for reverse cycle air conditioning/ heating.
- Engine access.
- See Galley specs above for more details.

Forward Port Cabin

- Queen sized athwartships bunk.
- Oversized storage in 4 lockers adjacent to bunk. Deep bookshelf over bunk.
- Under mattress storage.
- One deep hanging closet locker, vanity with storage, and one deep multi-shelf locker.
- 2 small hatches and 1 large hatch for excellent ventilation and natural light.

Forward Port Head

- En suite head with Jabsco saltwater manual flush, full sized toilet. New May 2024
- Medicine cabinet, wall shelving, under sink storage, and 3 large storage lockers.
- Bathtub with shower/ tub which holds washing machine. New 2021 (washing machine can be moved elsewhere)
- 1 small side port and one large side hatch for ventilation.
- Access to forepeak storage through shower/tub area.

Creature Comforts and Extras

- Rainman watermaker. New November 2021. High output 30 gallons per hour. Full set of spares. Gas powered with a dedicated generator. Portable and independent of all systems.
- Reverse cycle heating and air conditioning. New 2019. Works on shore power only. 16000 BTU CruiseAir Turbo unit for salon and forward cabins.
- 14000 BTU CruiseAir reverse cycle heating and air conditioning unit for galley and aft cabins.
- Giantex Washing machine. New November 2021
- Stereo speakers in the salon and cockpit.
- Bluetooth stereo system in salon.
- Mantus pony dive tank SCUBA set.
- Sun awnings for foredecks.
- Range of exterior screens for hatches.
- Range of boat hooks and brushes.

Deck

Deck

- KiwiGrip non-skid throughout. Side decks and cabin top applied October 2023.
- LED mid-mast deck light. New October 2023.
- Forward trampoline netting and slides. New 2021. Slides are half heavy duty metal and half heavy duty UV resistant plastic with Dyneema lacing line.
- Port and Starboard diesel fuel tanks/ 50 gallons each. Tanks cleaned and polished 2021.
- Vented propane locker with 3 propane tanks.
- Port and Starboard forepeak sail lockers for fenders, lines, and sail storage. Top loading access and internal access.
- Heavy midship cleats port and starboard.
- Port and starboard bow seats.
- Port and starboard bow cleats.

External Generator

Ryobi 1800 W Stand Alone Generator

Safety

- 10 adult offshore USCG compliant PFD's.
- New Grocco Bronze thru-hulls 2021.
- 3 adult inflatable PFD's with integrated harness and safety clip-in lines.
- Removable heavy webbing jack lines cockpit to forward of mast.
- Garmin InReach SE+ Satellite communicator new November 2021.
- Emergency high-powered portable bilge pump with power cable long enough to reach 12V outlet from anywhere on boat.
- Majestic has a full set of fire extinguishers, flares, CO2 alarm, and smoke alarm.

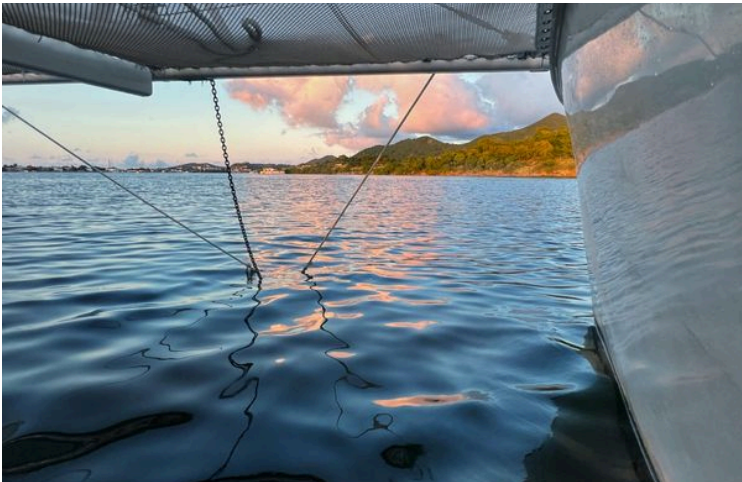
Dinghy

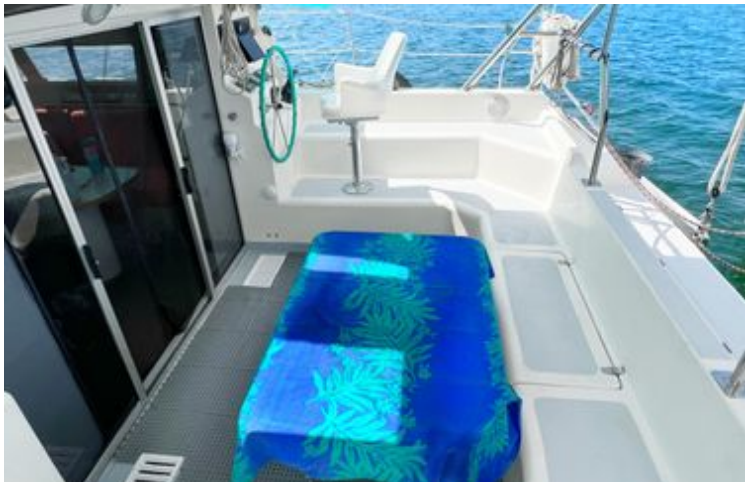
- 2023 Highfield aluminum RIB 360 (11' 10") with Sunbrella UV chaps custom made 2023 by Turbulence LTD Grenada.
- 2017 25hp Yamaha EFI outboard. The dinghy can plane with 800 pounds of gear or people.
- 6 gallon gas tank concealed in bow locker
- Stainless steel security chain and small stainless steel Mantus anchor. Long painter and clip. New 2024.

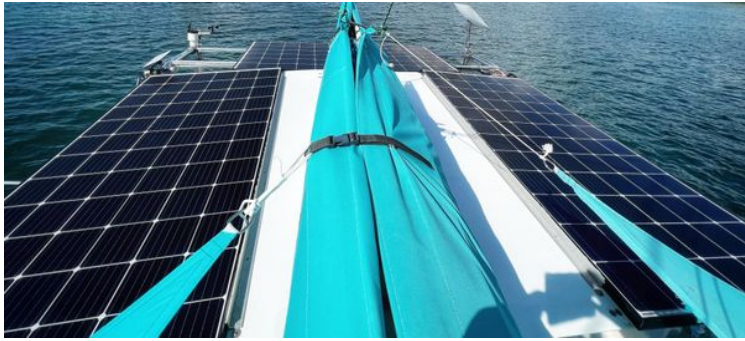
Disclaimer

The Company offers the details of this vessel in good faith but cannot guarantee or warrant the accuracy of this information nor warrant the condition of the vessel. A buyer should instruct his agents, or his surveyors, to investigate such details as the buyer desires validated. This vessel is offered subject to prior sale, price change, or withdrawal without notice.



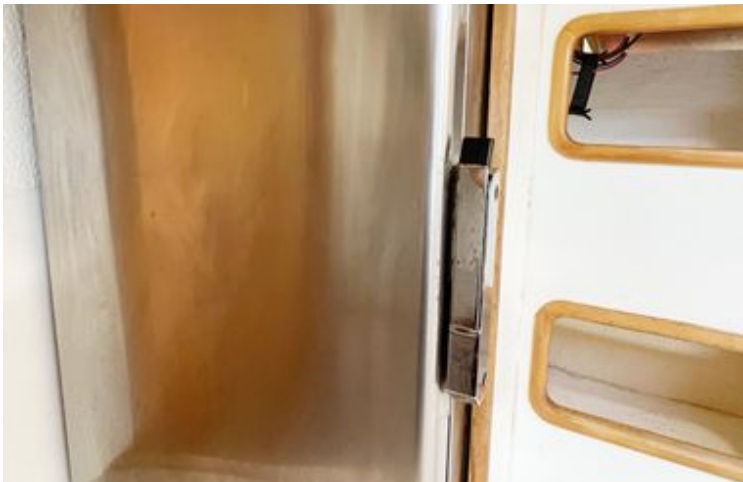




















Same Space - Aft Port Flex Room



